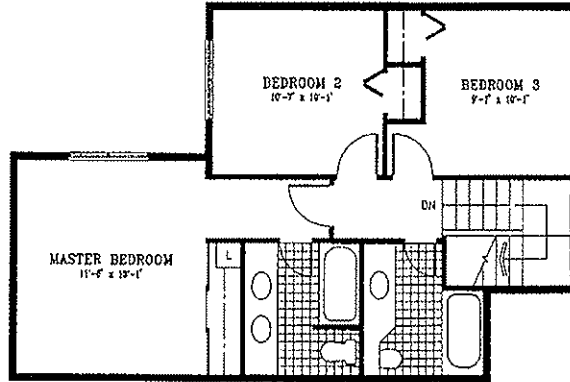


- NO PATIO EXTENSION
 - WALKWAY FROM GARAGE TO PATIO ALLOWED.



THE TRILLIUM

- 1377 square feet
- 3 bedrooms
- Master bedroom with 4 piece ensuite
- Second full bathroom plus ground floor powder room
- Large living area with fireplace
- Open kitchen with 3 major appliances
- Large private terrace
- Attached garage