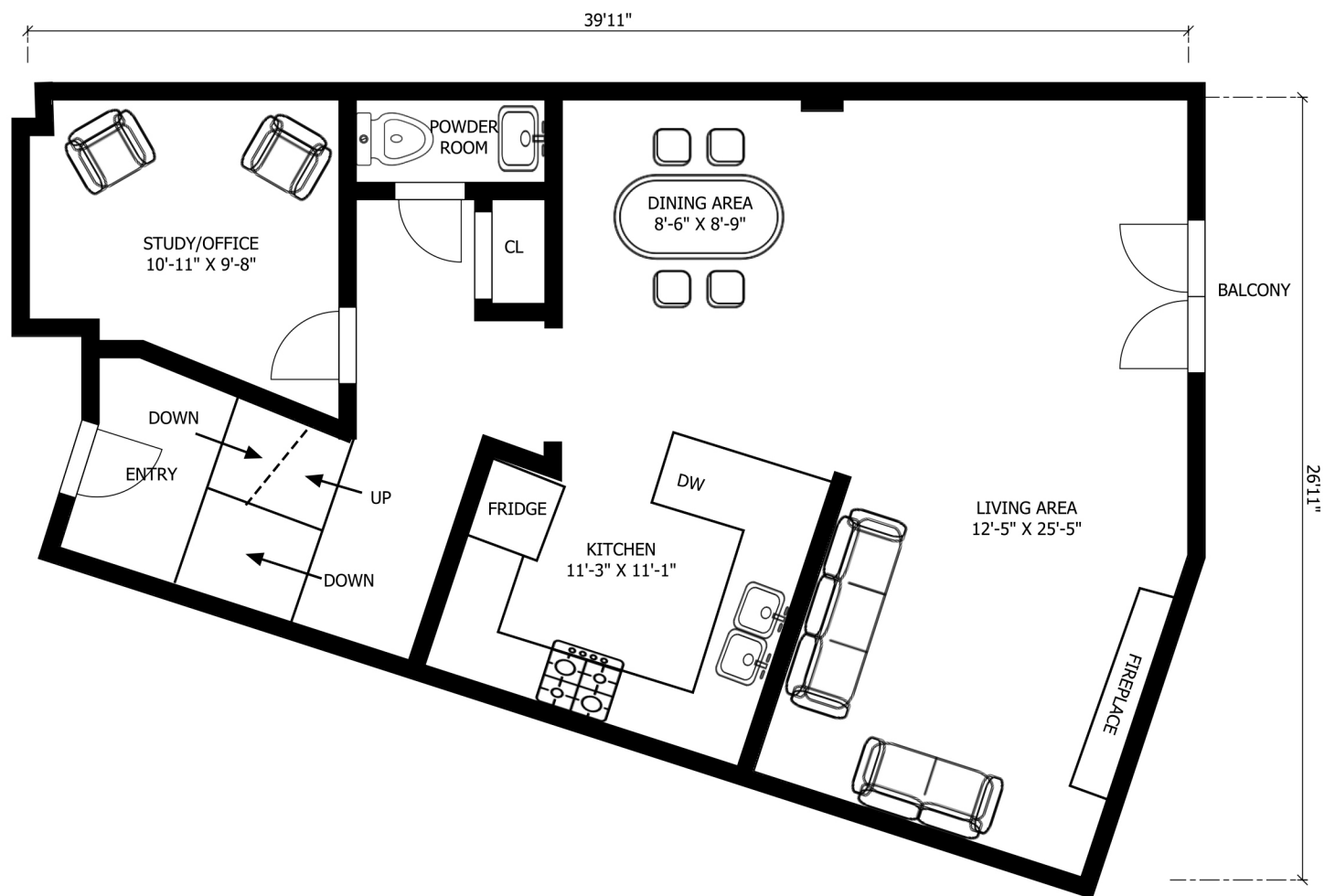


5 BOARDWALK AVE, COLLINGWOOD

MAIN LEVEL

approximately
885 SQFT

of approximate total
2373 SQFT

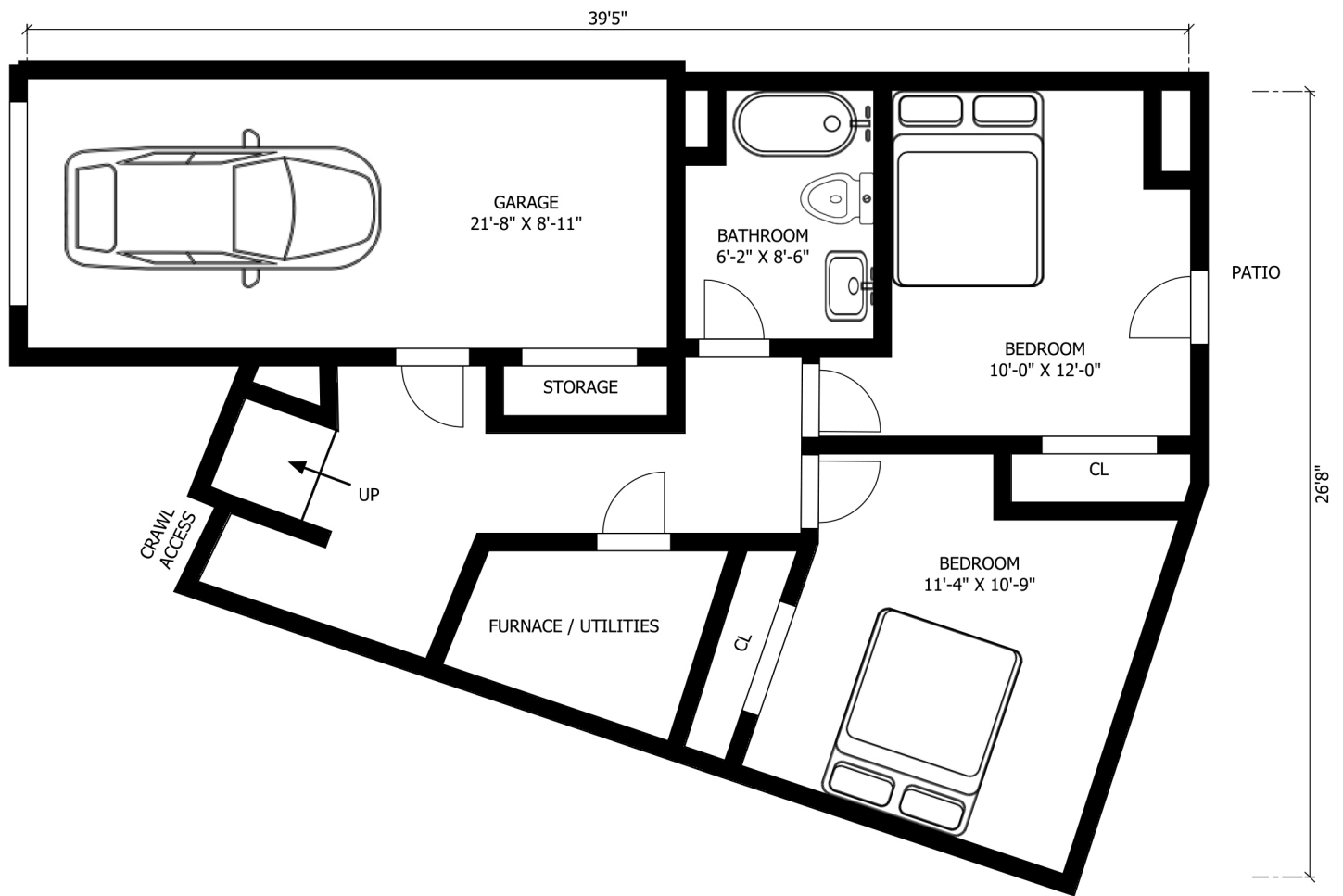


THIS FLOOR PLAN HAS BEEN MEASURED AND IS BELIEVED TO BE ACCURATE BUT CANNOT BE GUARANTEED. ALL MEASUREMENTS SHOULD BE INDEPENDENTLY VERIFIED. FOR ILLUSTRATION PURPOSES ONLY. NOT TO SCALE. MAY INCLUDE AREAS OF LOW CLEARANCE, UNFINISHED, AND/OR UNHEATED SPACE.

5 BOARDWALK AVE, COLLINGWOOD

GROUND LEVEL

approximately
603 SQFT
of approximate total
2373 SQFT

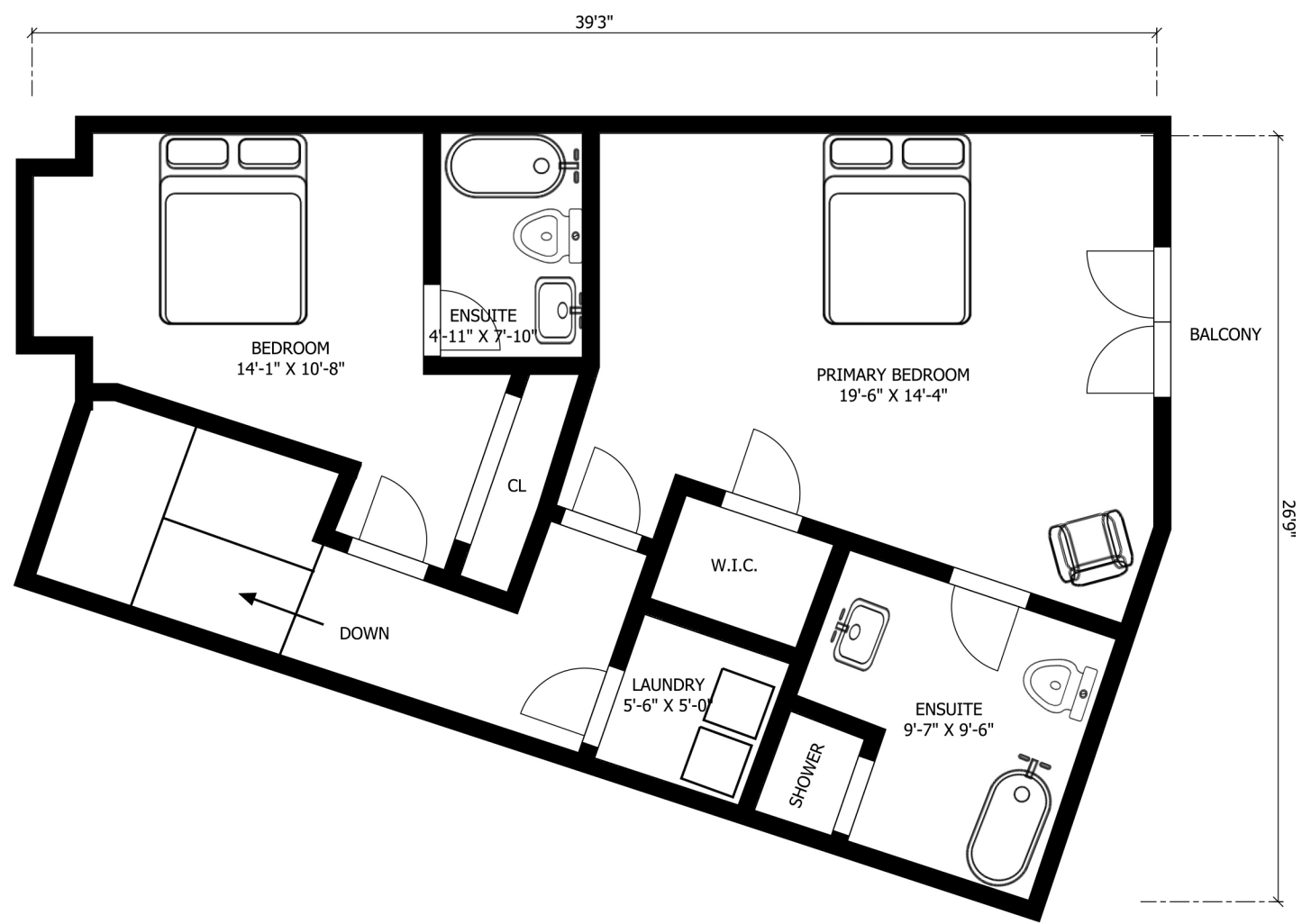


THIS FLOOR PLAN HAS BEEN MEASURED AND IS BELIEVED TO BE ACCURATE BUT CANNOT BE GUARANTEED. ALL MEASUREMENTS SHOULD BE INDEPENDENTLY VERIFIED. FOR ILLUSTRATION PURPOSES ONLY. NOT TO SCALE. MAY INCLUDE AREAS OF LOW CLEARANCE, UNFINISHED, AND/OR UNHEATED SPACE.

5 BOARDWALK AVE, COLLINGWOOD

UPPER LEVEL

approximately
885 SQFT
of approximate total
2373 SQFT



THIS FLOOR PLAN HAS BEEN MEASURED AND IS BELIEVED TO BE ACCURATE BUT CANNOT BE GUARANTEED. ALL MEASUREMENTS SHOULD BE INDEPENDENTLY VERIFIED. FOR ILLUSTRATION PURPOSES ONLY. NOT TO SCALE. MAY INCLUDE AREAS OF LOW CLEARANCE, UNFINISHED, AND/OR UNHEATED SPACE.