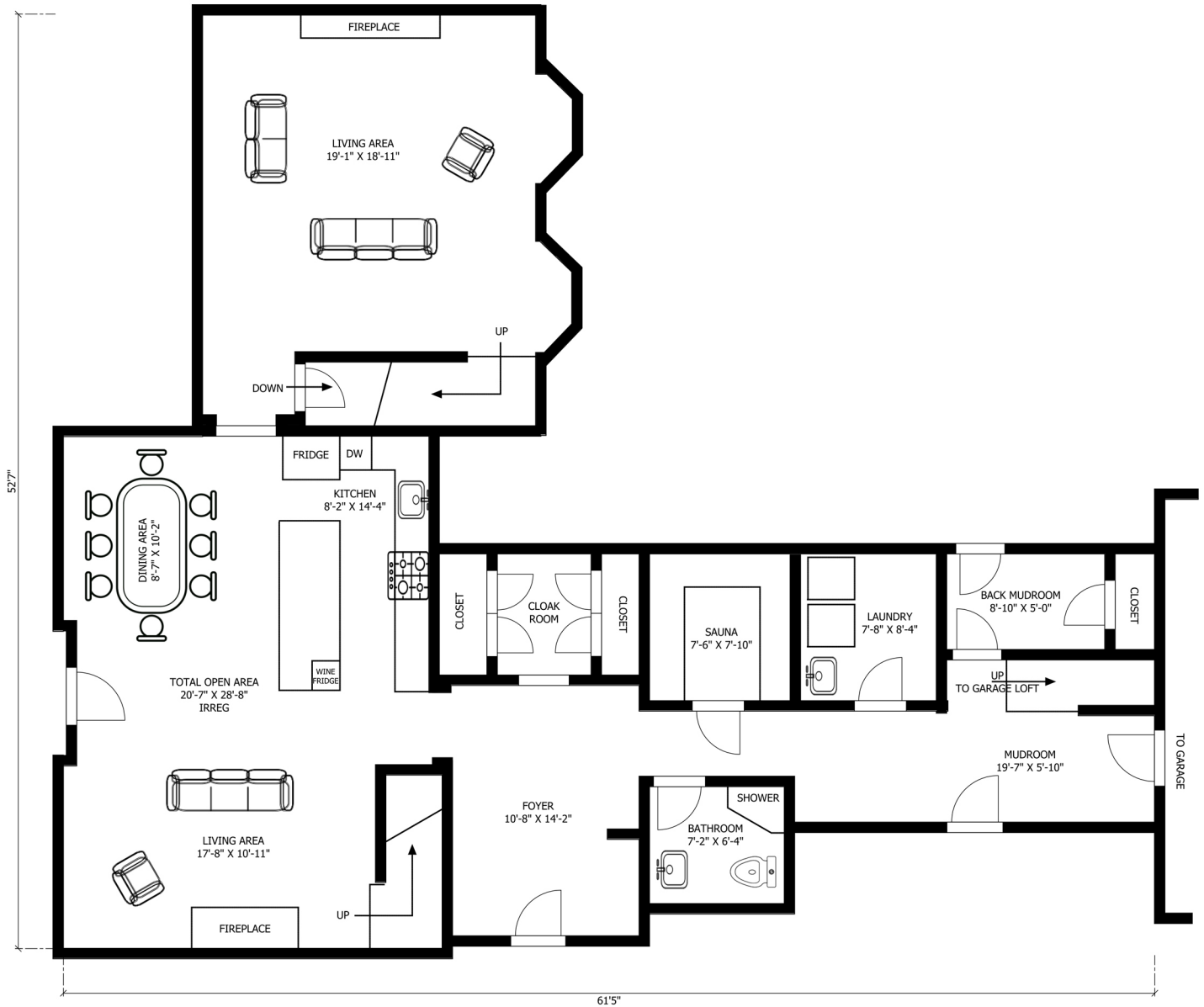


569703 SIXTH SIDEROAD, BLUE MOUNTAIN

MAIN LEVEL

approximately
1924 SQFT

of approximate total
3535 SQFT



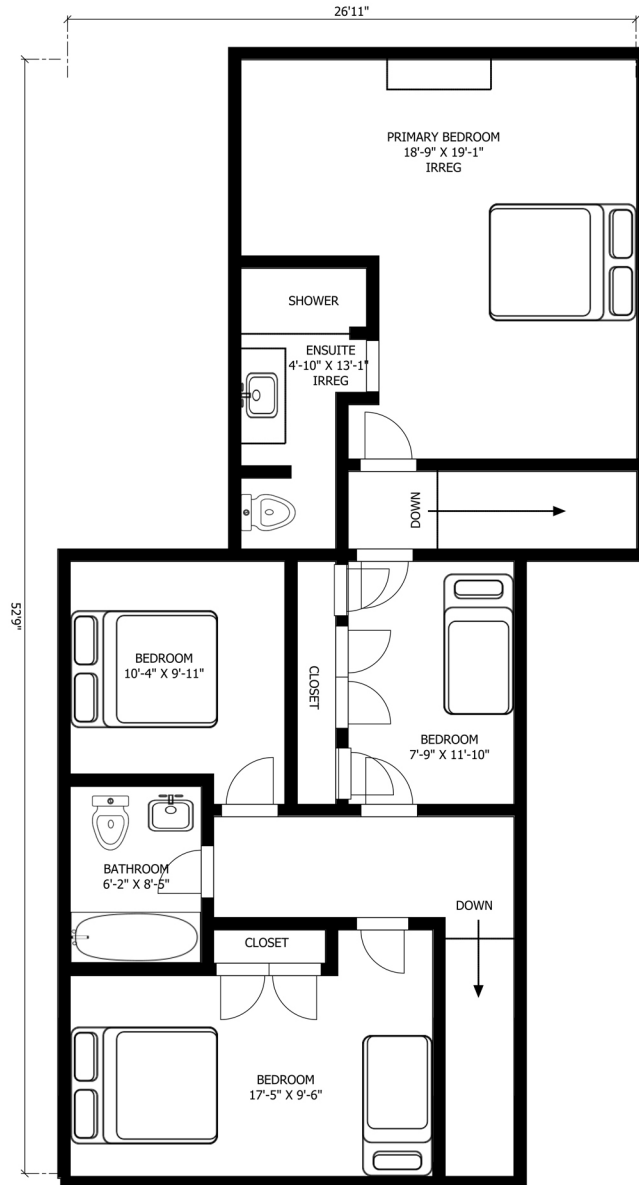
THIS FLOOR PLAN HAS BEEN MEASURED AND IS BELIEVED TO BE ACCURATE BUT CANNOT BE GUARANTEED. ALL MEASUREMENTS SHOULD BE INDEPENDENTLY VERIFIED. FOR ILLUSTRATION PURPOSES ONLY. NOT TO SCALE. MAY INCLUDE AREAS OF LOW CLEARANCE, UNFINISHED, AND/OR UNHEATED SPACE.

569703 SIXTH SIDEROAD, BLUE MOUNTAIN

UPPER LEVEL

approximately
1151 SQFT

of approximate total
3535 SQFT



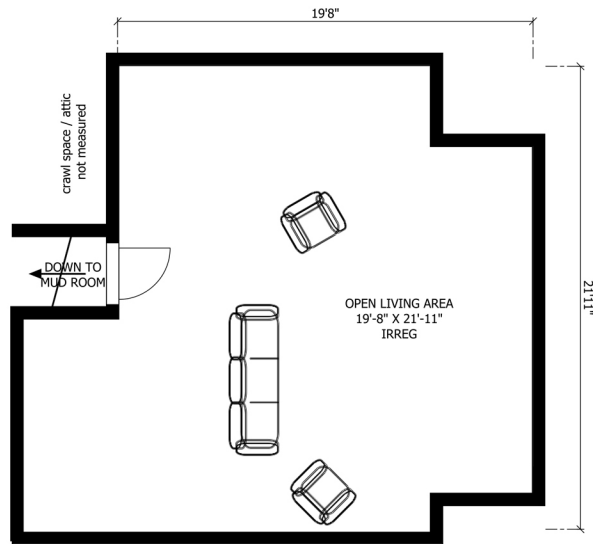
THIS FLOOR PLAN HAS BEEN MEASURED AND IS BELIEVED TO BE ACCURATE BUT CANNOT BE GUARANTEED. ALL MEASUREMENTS SHOULD BE INDEPENDENTLY VERIFIED. FOR ILLUSTRATION PURPOSES ONLY. NOT TO SCALE. MAY INCLUDE AREAS OF LOW CLEARANCE, UNFINISHED, AND/OR UNHEATED SPACE.

569703 SIXTH SIDEROAD, BLUE MOUNTAIN

LOFT LEVEL

approximately
460 SQFT

of approximate total
3535 SQFT



THIS FLOOR PLAN HAS BEEN MEASURED AND IS BELIEVED TO BE ACCURATE BUT CANNOT BE GUARANTEED. ALL MEASUREMENTS SHOULD BE INDEPENDENTLY VERIFIED. FOR ILLUSTRATION PURPOSES ONLY. NOT TO SCALE. MAY INCLUDE AREAS OF LOW CLEARANCE, UNFINISHED, AND/OR UNHEATED SPACE.